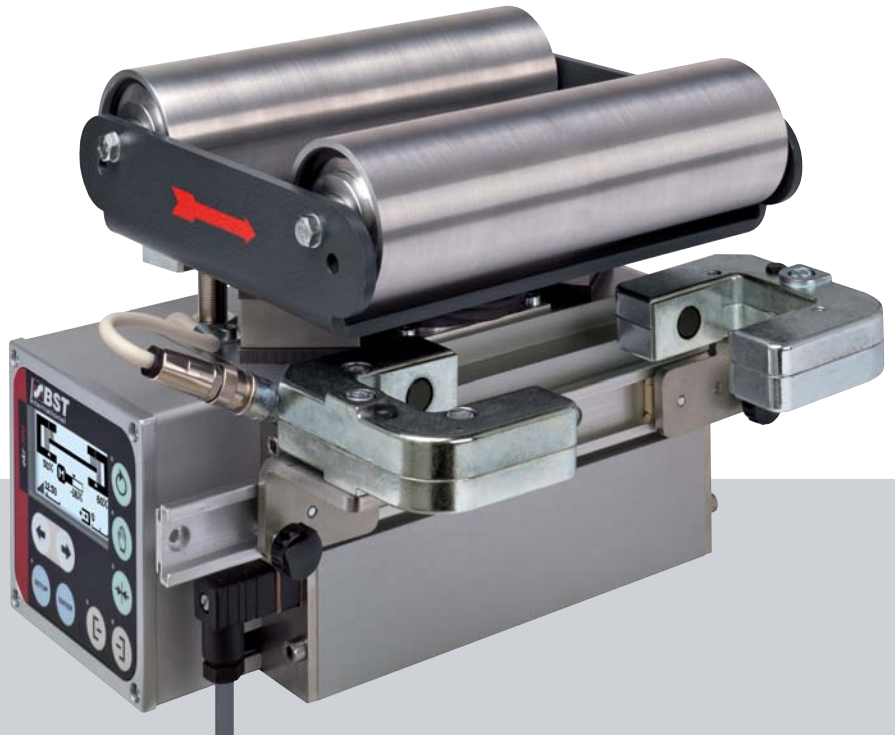


BST compact web guide
Precise web guiding
with minimal space

Compact Guide



Connect and produce!

Engineered for precise control of narrow webs in the label, packaging, and non-woven industries, the highly compact design allows for easy fit onto production machines with minimal space and effort.

The controller and actuator have been cleverly integrated into the **CompactGuide** housing to save space and the entire guide is engineered for fast installation with minimal effort. Install, connect, produce!

This is BST quality through and through. Featuring solid multi-point support on the displacement frame, precision-mounted track rollers, and a high-performance actuator that allows for web tension up to 300 N (70 lbs); this is a web guiding system that will give you many years of precise, reliable service.

Compact and flexible!

The compact web guiding system also gives tremendous flexibility. Three sizes ensure the best fit on a wide range of machines.

Edge or center-line guiding is done via single or dual infrared sensors, which are integrated into the **CompactGuide** design to monitor and control web position directly after the exit roller. When working with transparent films, ultrasonic sensors are recommended.

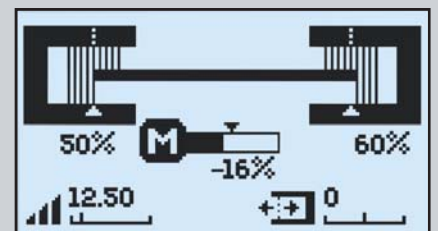
For label printing applications, an integrated splice table with pneumatic clamps is an available option.

Operation of the guide is done via the unique operator control panel. Mounted directly on the face of the **CompactGuide** housing in the standard configuration, it is easily removed and mounted on your machine in the location best suited for the operator.

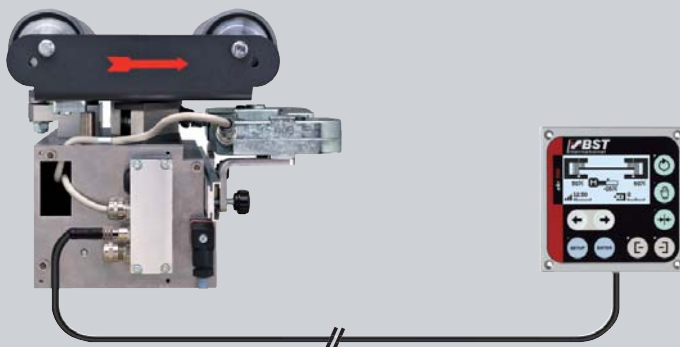
It couldn't be easier to use!

The user-friendly membrane keypad has easy to understand colour-coded icons that provide simple and extremely intuitive operation, and ensure direct access to all of the guiding functions.

The control panel features an illuminated LCD with a graphic display showing the status of system functions and parameters. No pull down menus, no complicated screens to navigate. Simple and easy.



The unique LCD graphic display shows sensor coverage, actuator position, system gain setting and the guiding set point.

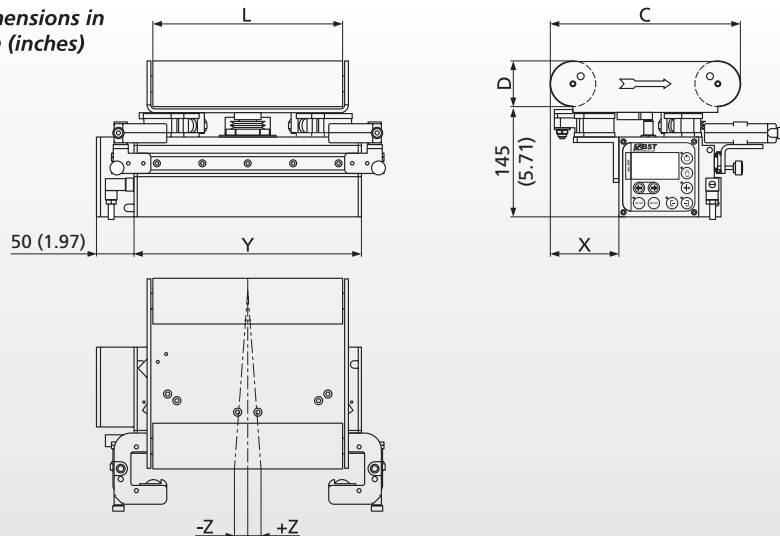


CompactGuide shown with the control panel in a remote location

CompactGuide

Technical Data

Dimensions in
mm (inches)



	Width Y [mm] (inches)	Roller Length L [mm] (inches)	Correction Span C [mm] (inches)	Roller Diameter D [mm] (inches)	Dimension X [mm] (inches)	Stroke Z [mm] (inches)	Max. Web Tension [N] (lbs)
Size 1	200 (7.87)	160 (6.30)	180 (7.09)	40 (1.57), 60 (2.36)	20 (0.79)	±17 (±0.67)	300 (70)
			200 (7.87)	40 (1.57), 60 (2.36)			
		200 (7.87)	180 (7.09)	40 (1.57), 60 (2.36)	90 (3.54)		
			200 (7.87)	60 (2.36), 80 (3.15)			
			250 (9.84) 300 (11.81)	60 (2.36), 80 (3.15)			
Size 2	300 (11.81)	250 (9.84)	180 (7.09)	40 (1.57), 60 (2.36)	20 (0.79)	±17 (±0.67)	300 (70)
			200 (7.87)	60 (2.36), 80 (3.15)			
			250 (9.84) 300 (11.81)	60 (2.36), 80 (3.15)			
		300 (11.81)	180 (7.09)	40 (1.57), 60 (2.36)	20 (0.79)		
			200 (7.87)	60 (2.36), 80 (3.15)			
			250 (9.84) 300 (11.81)	60 (2.36), 80 (3.15)			
			250 (9.84)	60 (2.36), 80 (3.15)			
Size 3	400 (15.75)	350 (13.78)	250 (9.84)	60 (2.36), 80 (3.15)	90 (3.54)	±17 (±0.67)	300 (70)
		400 (15.75)	300 (11.81)				
		450 (17.72)	300 (11.81)				

Technical Data

Supply voltage:
24 V DC ± 10%

Current consumption:
max. 2.5 A

Guiding functions:

- Guiding to the **left** web edge
- Guiding to the **right** web edge
- Guiding to the web **center-line**
- **Center positioning** of rotating frame guide

Actuating speed:

max. 20 mm/s (0.79 "/s) at the exit roller

Sensors:

- Infrared sensors
- Ultrasonic sensors

Remote control inputs for:

- Automatic guiding
- Manual positioning
- Center positioning
- Web edge guiding
- Web center-line guiding
- Manual positioning (left/right)

Controller interlock:

through external switch or PLC

Options:

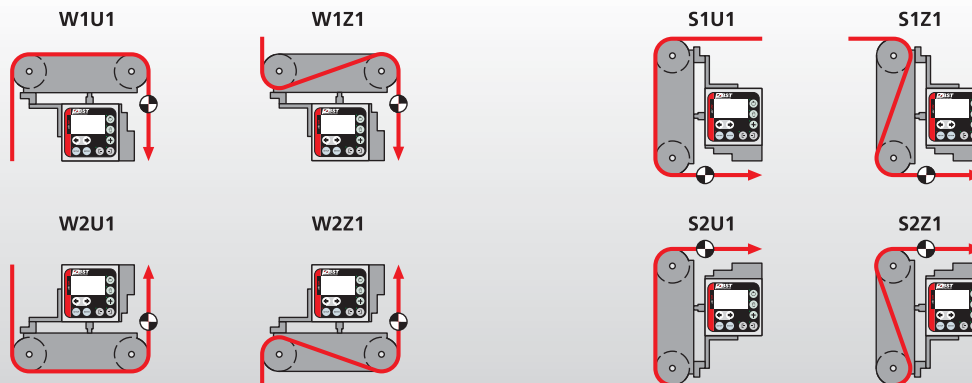
- Integrated splice table with pneumatic clamps

Operating conditions:

- Temperature: 0°C (32°F) ... 50°C (122°F)
- Air humidity: 5 ... 90 %, not condensing

Protection class: IP 54

Installation
positions



BST International GmbH
Heidsieker Heide 53
33739 Bielefeld, Germany
Phone: +49 5206 999-0
Fax: +49 5206 999-999
www.bst-international.com
info@bst-international.com

BST Pro Mark
650 West Grand Avenue # 301
Elmhurst, Illinois 60126 USA
Phone: +1 630 833-9900
Fax: +1 630 833-9909
www.bstpromark.com

Local representative:

A member of the eLEXIS group

©2007 BST International GmbH, Bielefeld, Germany - BST 1711/0807 en - Subject to change